



## **MTS GPS/GLONASS TRACKER:**

We are into Design and Manufacturing of MTS GPS/GLONASS Tracker for Car, Truck, Bike, asset tracking personal tracking etc (**Made In India**). Also we do customise according to customer requirement. Leveraging on our skilled and qualified professionals, we are actively involved in offering a trendy range of **Fuel Monitoring System** to our valuable customers at pocket-friendly prices.

**MTS GPS/GLONASS tracking systems** facilitates you to track, organize, secure and manage your movable assets. MTS is based on advanced GPS/GLONASS/GSM technology which can be installed on any vehicle to track its geo location anywhere all over the world. It's allows you to connect various sensors enabling a web based system to remotely monitor and control your vehicle.

Various sensors like fuel, temperature, etc. can be connected to device to remotely monitor the health status of your vehicle. This also allows you to keep a tap on vehicle speed. It can accurately measure distance travelled.

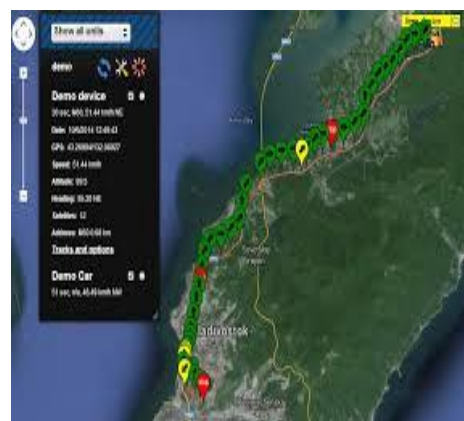
MTS GPS/GLONASS tracker has built-in alert and notification system to alert you in case of engine overheat, over speed, ignition ON etc.

MTS GPS/GLONASS software is remotely upgradable. In case of any feature addition which doesn't require any change in device hardware, It can be upgraded remotely without any hassles of removing and reinstalling the hardware.

MTS GPS/GLONASS tracker allows you to remotely configure various parameters like registered mobile numbers, server IPs, temperature limits, speed limits and many more...



**MTS GPS/GLONASS TRACKER**





## Features:

- **Real-time** Tracking
- GPS based tracking for **higher accuracy**
- **GSM based** tracking as fall-back option
- General Purpose **IO** interfaces for sensors and Relay controls
- **Lat-long** storage in case of server connectivity failure
  - **5K Logs**
  - Expandable Upto **20K**
- Remote Firmware Upgrade (**FOTA**)
- Remote Configuration (**COTA**)
- External Supply
  - support for **12 - 24V** systems
- Battery backup
  - **3 – 8 hours** (normal mode)
  - **2 - 4 days** (standby)
- Tamper Proof
- Alerts and Notifications

## GSM/GPRS

- **Quad-band** 850/900/1800/1900MHz
- GPRS **Class 12** Max. 85.6 kbps (uplink & downlink)
- **SIM** – Standard Size (Single)
- Certificates
  - CE FCC GCF PTCRB NCC
  - ANATEL IC ICASA UCRF A-Tick
  - Vodafone Rogers

## GPS/GLONASS

- Receiver Type
  - 99 search channels, 33 simultaneous tracking channels
- Cold Start **15s typ@-130dBm**
- Warm Start **5s typ@-130dBm**
- Hot Start **1s typ@-130dBm**
- Accuracy **< 1.5m CEP@-130dBm**

### FOTA (*firmware-over-the-air*)

- Remote software upgrade



## COTA (configuration-over-the-air)

- Remote Configuration through SMS and TCP/IP connection
- Configuration through mobile Call
- APN
- server IP and Port
- Alert settings like Speed Limits
- Registered Owner Number
- Add/Delete Co-Owners Number
- On Demand Tracking Mode
- Continuous Tracking Mode
- Fixed Ping Rate Mode (5 – 600 sec)
- Ping Rate Intelligent Mode ON/OFF
- Low Power Mode ON/OFF
- Enable/Disable Auto generated Alerts
- Security Mode ON/OFF
- Immobilize Vehicle
- Inbuilt Battery Backup

## Alerts & Notification (SMS and TCP/IP)

- Configuration change
- Door Open
- Bonnet Open
- Ignition ON
- AC ON
- Device Tampering
- OverSpeed
- Illegal vehicle movement (Towing)
- GeoFence - Entry/Exit (server feature)
- Route deviation (server feature)
- Fuel & Temperature
- Battery (low and disconnected)

## Tracking

- Current Location
- Track History (server feature)
- Location Storage during network loss
- GSM based tracking as fall-back option

## Input & Output

- 2 Digital Inputs (on/off detection like door, AC)
- 2 Digital Outputs (relay control like immobilizer)
- 2 Analog Inputs (sensor like fuel, temperature)
- Expandable digital IOs (through i2c expander)

## Audio Interface

- Microphone and Speaker (optional)
- Expandable digital IOs (through i2c expander)